



DBMoto™

Real-time data replication

Welcome to DBMoto, providing data replication and transformation for your enterprise server and desktop needs. More than ever before, today's business applications depend on data from multiple databases. Whether deploying applications to provide customers with real-time answers, to furnish suppliers with time-critical production requirements, or to supply management with the latest metric and financial reports, key data comes from your core relational databases. Enterprises need to move data between database platforms. Fast data delivery between relational database platforms yields better performing applications. DBMoto does all this and more!

Achieving efficient data delivery with enterprise-sized data requires expertise in database server environments. HIT Software has been delivering relational data access products since 1994, and DBMoto incorporates our proven access technology to ensure high performance yet minimally intrusive data replication.

Real-Time Data Replication

DBMoto's Enterprise Manager includes wizards that help you easily connect to and identify source and target databases, create target tables, and set up replication processes. Replication mapping and rules are maintained in a metadata database that can be stored on any database platform. DBMoto's Enterprise Manager offers a graphical point-and-click interface that makes it easy to drill down into databases, tables, and columns to understand data elements. DBMoto was specifically designed to replicate data between databases in "refresh," "mirroring" or "synchronization" modes.

In refresh mode, DBMoto reads a large amount of data, applies administrator-defined mapping rules, and writes the result to the target database. Mirroring mode performs a real-time incremental replication based on log/journal management. Synchronization mode provides a way for sites to merge, or synchronize, data incrementally using DBMoto's bi-directional mirroring capabilities. Should either the source or target databases become unavailable, DBMoto allows the user to make decisions on a course of actions. For management and auditing, DBMoto can record replication activity in a specialized log. While performing a replication, DBMoto offers a visual tool that provides real-time information on replication status.

Unmatched Replication and Transformation Control

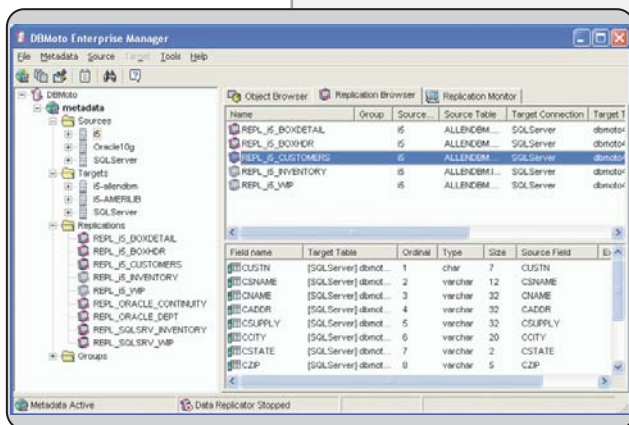
With DBMoto, users define data replication and transformations by applying business rules and mapping. Unlike other solutions, DBMoto offers unlimited control over data replication and transformation using programming or scripting technologies. DBMoto supports two mapping methods: automatic mapping, where source field values are duplicated for the target table, and manual mapping. Both methods can be optionally controlled programmatically or via scripts. DBMoto also includes a powerful expression generator for interactive data transformation.

A key advantage of DBMoto is data delivery and transformation control via scripts and events independent of the associated databases. DBMoto automatically generates replication events during operation. Administrators can define responses to these events with scripts and configure DBMoto to be notified via email if critical events occur.

DBMoto also includes a Windows environment accessible object class that provides detailed control of source and target data during replication. The object properties and methods give users control to perform source or target table lookups, append log activity, and update target tables. All information retrieved from transaction logs, such as user, date and time and device is available within the class object.

Databases supported

- DB2 for i5/OS
- DB2 for z/OS (OS/390)
- DB2 UDB
- Oracle
- Microsoft SQL server
- MySQL
- solidDB for MySQL
- Sybase ASE
- SQL Anywhere
- Ingres
- Informix
- Gupta SQLBase
- Enterprise DB
- PostgreSQL
- Firebird
- MS Access
- Solid
- ANTs





No Programming Required on Source or Target Databases

Though optionally extendable on a middle tier Windows platform, DBMoto does not require any programming on the source or target database platforms: no programming needed on the source database; no stored procedures to develop; and no proprietary syntax to learn.

Database Sources Supported (Refresh mode)*

IBM System i and AS/400 V3R2 and later
 IBM DB2 for z/OS (OS/390) v5 and later
 IBM DB2 for Windows v5 and later
 IBM DB2 for AIX, Linux, HP/UX, Solaris v5 and later
 Oracle v8 and later
 Microsoft SQL Server v6.5 and later
 MySQL v3.23 and later
 Sybase ASE v12.50 and later
 SQL Anywhere
 Ingres 2006
 Informix
 Gupta SQLBase Server v8.5.0
 MS Access 97 and later
 Solid
 PostgreSQL
 ANTs

Database Sources Supported (Mirroring mode)*

IBM System i and AS/400 V3R4 and later
 IBM DB2 for z/OS (OS/390) v5 and later
 IBM DB2 for Windows v5 and later
 IBM DB2 for AIX, Linux, HP/UX, Solaris v5 and later
 Oracle v8 and later
 Microsoft SQL Server v6.5 and later
 Gupta SQLBase
 ANTs

Database Targets Supported*

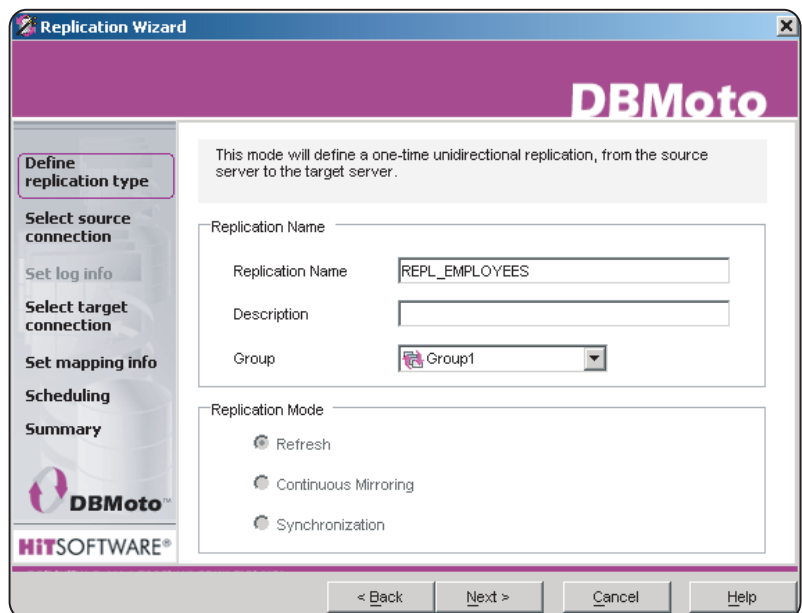
IBM System i and AS/400 V3R2 and later
 IBM DB2 for z/OS (OS/390) v5 and later
 IBM DB2 for Windows v5 and later
 IBM DB2 for AIX, Linux, HP/UX, Solaris v5 and later
 Oracle v8 and later
 Microsoft SQL Server v6.5 and later
 MySQL v3.23 and later
 Sybase ASE v12.50 and later
 SQL Anywhere
 Ingres 2006
 Informix
 Gupta SQLBase Server v8.5.0
 MS Access 97 and later
 Solid
 PostgreSQL
 ANTs

Key Features

- Support for all major database platforms: IBM DB2 UDB (including System i /AS400 and z/OS), Oracle, Microsoft SQL Server, MySQL, Sybase Adaptive Server Enterprise, SQL Anywhere, Ingres, Informix, Cloudscape, Gupta SQL Base, EnterpriseDB, PostgreSQL, Firebird, MS Access, Solid and ANTs
- Replication modes: refresh, mirroring, synchronization
- Administrative wizards for fast, easy configuration and setup
- No programming needed on source or target database platforms
- Full customization via Microsoft VB.NET scripting and event driven environment
- Built-in transformation functions, with custom functions definable at any time
- Remote accessibility of Enterprise Manager for centralized configuration and management
- Extensive log reporting and accessibility
- Powerful visual tool to provide information on replication status
- Object-oriented data access on both source and target databases
- Automatic creation of target tables
- Configuration and management of entire replication process from Windows platform
- User-friendly graphical interface
- Standard protocols (.NET, OLE DB and ODBC) to access tables in source and target databases

System Requirements

PC Server
 Windows 2003/2000/NT Server
 .NET Framework 1.1 or higher



* Visit our web site for additional databases supported.

HiT Software, Inc. • www.hitsw.com

phone: 1-408-345-4001 • fax: 1-408-345-4899 • e-mail: info@hitsw.com

HiT SOFTWARE®
 Open Up Your Data